

inventronics

Light is
everywhere

LINEARlight Flex BACKBONE





Contents

| | |
|--|----|
| 1 Introduction | 4 |
| 2 Discovering new dimensions of flexibility: LINEARlight Flex BACKBONE | 6 |
| 3 Compatible LED drivers | 11 |

1 Introduction

The light you need

Expand your lighting possibilities thanks to products from Inventronics! Our business develops power supplies and related light modules, software and connectable components for traditional and LED illumination. These are essential components for luminaires in professional lighting applications that enable smart lighting solutions and digitalization. We offer easy-to-install, highly efficient products and extensive services that enable customers to develop their business with maximum flexibility. With a strong market presence, a diversified network of lighting specialists and globally recognized certificates, We can always provide the right portfolio of user-friendly technologies and expert support. Production is based on a close cooperation with electronic manufacturing service (EMS) suppliers and original design manufacturers (ODMs).





Your visions, your challenges, our solutions

Combine your creativity with our technology and turn your ideas into reality

What do you need for a successful lighting project? On the one hand, a lot of it depends on experience and creativity. Step by step, various ideas are put together and shaped into a clear concept. On the other hand, you also have to be a good observer and have to identify the typical challenges of a project in order to avoid bad surprises.

This is where Inventronics comes into play. With a comprehensive portfolio for a wide variety of lighting applications, we are the perfect partner for helping you rise to any challenge.

We support you in determining your special requirements and ensure that you have all the components you need. Moreover, you can rest assured that you will always receive a perfectly matched system.

Our LINEARlight Flex® range for linear and area applications is a prime example for our versatility. As a one-stop shop for flexible lighting solutions, we are able to offer a premium selection of different LED modules, profiles, accessories, LED drivers and light management systems. Enter a new level of flexibility in lighting design!





2 Discovering new dimensions of flexibility: LINEARlight Flex BACKBONE

Designed for outdoor and indoor contour lighting, LINEARlight Flex BACKBONE highlights building outlines in sophisticated and stylish architectural projects, underlining details and shapes. This innovative LED chain combines unprecedented flexibility with high-quality optical lenses for every single LED. Depending on your lighting task, you can choose between lenses with a beam angle of 30° (symmetrical) for subtle wallgrazing or 60° (asymmetrical) for powerful wallwashing effects.

Moreover, the fact that our innovative LINEARlight Flex BACKBONE is bendable sideways as well as upwards and downwards makes it stand out from the competition and enables you to discover completely new dimensions of 3D-flexibility and creative freedom.



LINEARlight Flex BACKBONE

Flexible LED modules with optical systems

Highlights:

- Outdoor or indoor contour/border light
- Integrated optics with dedicated lenses
- Optional accessories to ease installation
- Works perfectly with OPTOTRONIC LED drivers
- Flexible LED module, ideal for shaped surfaces
- Soldered cables on both sides

Features:

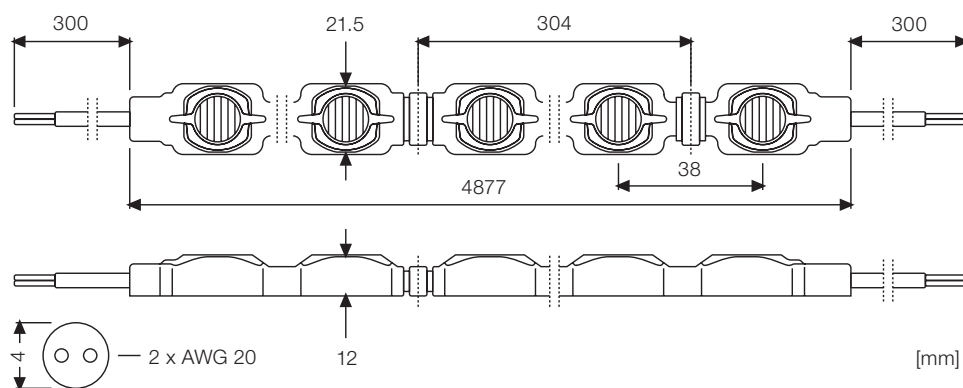
- Dimensions: 22 x 12 mm
- Length: 4.88 meters with soldered cables on each side (cuttable every 300 mm)
- 3 SDCM, CRI: 80, IP67
- 3 CCTs: 2700 / 3000 / 4000 K
- All products have a lifetime of 50,000 hours (L70B50)
- Two different optics: 30° symmetrical and 60° asymmetrical

Application areas:

- Architectural
- Outdoor
- Façade
- Path
- Cove



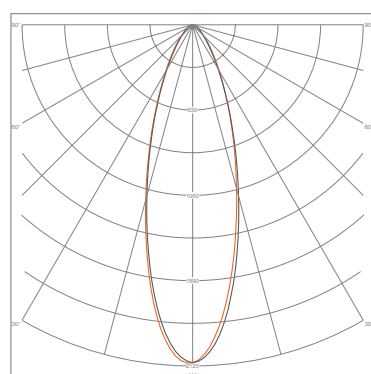
Technical data



Lowest bending radius = 175 mm

Number of LEDs per meter: = 26

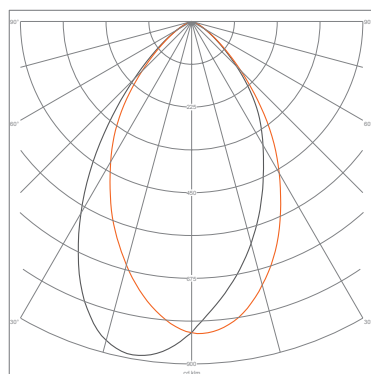
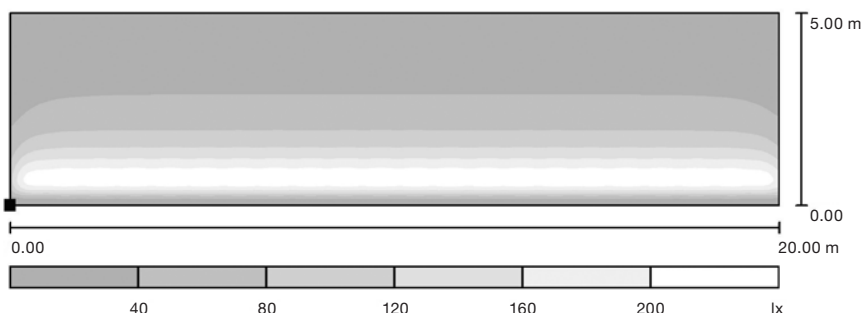
Light distribution curves



— C0-C180
— C90-C270

cd/1000lm

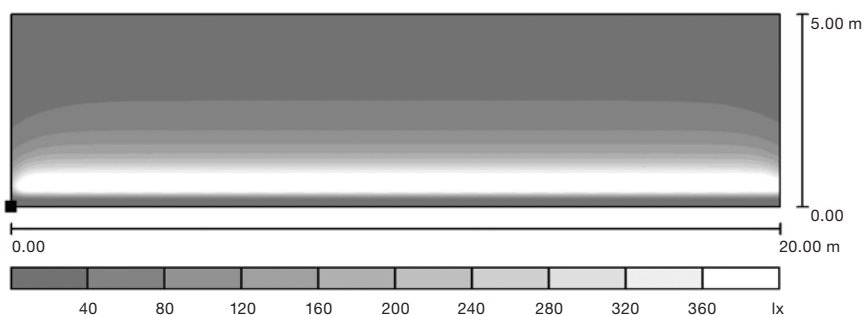
Optical lens 30° symmetrical



— C0-C180
— C90-C270

cd/1000lm

Optical lens 60° asymmetrical



Voltage and temperature data

| | |
|---|--------------|
| Nominal voltage | 24.0 V |
| Reverse voltage protection up to | 25.0 V |
| Temperature range in operation @ Tc point | -20...+70 °C |
| Storage temperature | -30...+70 °C |
| Ambient temperature IP67 | -20...+40 °C |
| Ambient temperature IP65 | -20...+50 °C |

Technical data

| Product name | Nominal CCT See color output data [K] | CRI | Optics | Lum. flux per meter [lm/m] | Power [W/m] | Lum. efficacy [lm/W] | Perform. temp. Tp [°C] | Length [m] |
|-----------------------------|---|-----|--------|----------------------------------|----------------|----------------------------|------------------------------|---------------|
| LFB1000-G1-827-30S-BK-05 L2 | 2700 | >80 | 30° | 1064 | 11.9 | 89 | 35 | 4.9 |
| LFB1000-G1-830-30S-BK-05 L2 | 3000 | >80 | 30° | 1118 | 11.9 | 94 | 35 | 4.9 |
| LFB1000-G1-840-30S-BK-05 L2 | 4000 | >80 | 30° | 1184 | 11.9 | 100 | 35 | 4.9 |
| LFB1000-G1-827-60A-BK-05 L2 | 2700 | >80 | 60° | 1294 | 11.9 | 109 | 35 | 4.9 |
| LFB1000-G1-830-60A-BK-05 L2 | 3000 | >80 | 60° | 1349 | 11.9 | 113 | 35 | 4.9 |
| LFB1000-G1-840-60A-BK-05 L2 | 4000 | >80 | 60° | 1480 | 11.9 | 124 | 35 | 4.9 |

Order codes

| Product name | Product code | EAN10 package dimensions (L x W x H) [mm] |
|-----------------------------|---------------|--|
| LFB1000-G1-827-30S-BK-05 L2 | 4062172344753 | 390 x 390 x 45 |
| LFB1000-G1-830-30S-BK-05 L2 | 4062172345194 | 390 x 390 x 45 |
| LFB1000-G1-840-30S-BK-05 L2 | 4062172345255 | 390 x 390 x 45 |
| LFB1000-G1-827-60A-BK-05 L2 | 4062172344777 | 390 x 390 x 45 |
| LFB1000-G1-830-60A-BK-05 L2 | 4062172345217 | 390 x 390 x 45 |
| LFB1000-G1-840-60A-BK-05 L2 | 4062172345279 | 390 x 390 x 45 |

Accessories

| Product name | Product code | Product description | Package content |
|--------------------------------|---------------|---------------------|-----------------------------|
| FX-LFBM-G1-BT-29H13.4-KIT20 | 4062172346368 | Side mounting clips | 40 x screws, 20 x clip kits |
| FX-LFBM-G1-BSL-29.2H28.5-KIT20 | 4062172346382 | Top mounting clips | 40 x screws, 20 x clip kits |
| FX-LFBM-G1-EC-KIT5 | 062172346344 | End caps | 5 x end caps, 1 x glue |

3 Compatible LED drivers

Integrated complete solutions for any kind of installation

Lighting concepts of today require far more than efficient, durable and highly functional lighting components. In fact, it is the interplay of LED strips and LED drivers and their combination with suitable lighting controls and accessories that form a perfectly matched system. We provide a broad range of matching products for nearly any kind of application, both indoors and outdoors. Discover the versatile LINEARlight Flex® product families as well as the Flexessories®, our comprehensive portfolio of accessories.

System components

Thanks to a modular system combining LED strips and matching Flexessories®, LED drivers and light management components, the complete portfolio for flexible LED solutions offers maximum freedom of design.



Constant-voltage LED drivers

24 V output for indoor and outdoor applications

Outdoor

1. Non-dimmable

OPTOTRONIC 24 V Protect

| | | | | | |
|--------------------------|--------------------------|--------------------------|---------------------------|---------------------------|---------------------------|
| 20 W | 40 W | 60 W | 100 W | 130 W | 250 W |
| 24 V | 24 V | 24 V | 24 V | 24 V | 24 V |
| IP66 | IP66 | IP66 | IP66/67 | IP66/IP67 | IP66/67 |
| OT 20/220... 240/24 P | OT 40/220... 240/24 P | OT 60/220... 240/24 P | OT 100/220... 240/24 P | OT 130/220... 240/24 P | OT 250/220... 240/24 P |
| 4052899545922 | 4052899545946 | 4052899545960 | 4052899545984 | 4052899546004 | 4052899546028 |
| 178 x 43 x 25 mm | 208 x 43 x 26 mm | 208 x 43 x 26 mm | 240 x 50 x 34 mm | 220 x 63 x 37 mm | 265 x 68 x 40 mm |

OPTOTRONIC FIT 24 V Protect

| | | | |
|----------------------------|-----------------------------|-----------------------------|-----------------------------|
| 80 W | 150 W | 200 W | 300 W |
| 24 V | 24 V | 24 V | 24 V |
| IP66/67 | IP66/67 | IP66/67 | IP66/67 |
| OT FIT 80/220- 240/24 P | OT FIT 150/220- 240/24 P | OT FIT 200/220- 240/24 P | OT FIT 300/220- 240/24 P |
| 4062172085465 | 4062172085601 | 4062172085649 | 4062172085687 |
| 170 x 53 x 31.5 mm | 240 x 53 x 31.5 mm | 215 x 53 x 31.5 mm | 250 x 68 x 39.6 mm |

2. Dimmable

OPTOTRONIC intelligent DALI 24 V 1-4 CH

| | |
|--------------------------------------|------------------------------------|
| 100 W | 210 W |
| 24 V | 24 V |
| IP66/67 | IP66/67 |
| 1-4 CH | 1-4 CH |
| OTi DALI 100/220- 240/24 1-4 CH P | OTi DALI 210/220- 240/24 1-4 CH |
| 4062172119191 | 4062172032087 |
| 237 x 69 x 37 mm | 330 x 69 x 37 mm |

OPTOTRONIC 24 V Protect 1-10 V DIM

| | | | | | |
|------------------------------|------------------------------|------------------------------|-------------------------------|-------------------------------|-------------------------------|
| 20 W | 40 W | 60 W | 100 W | 130 W | 250 W |
| 24 V | 24 V | 24 V | 24 V | 24 V | 24 V |
| IP66 | IP66 | IP66 | IP66/67 | IP66/IP67 | IP66/67 |
| OT 20/220... 240/24 DIM P | OT 40/220... 240/24 DIM P | OT 60/220... 240/24 DIM P | OT 100/220... 240/24 DIM P | OT 130/220... 240/24 DIM P | OT 250/220... 240/24 DIM P |
| 4052899545809 | 4052899545823 | 4052899545847 | 4052899545861 | 4052899545885 | 4052899545908 |
| 178 x 43 x 25 mm | 208 x 43 x 26 mm | 208 x 43 x 26 mm | 240 x 50 x 34 mm | 220 x 63 x 37 mm | 265 x 68 x 40 mm |

Indoor

1. Non-dimmable

OPTOTRONIC 24 V SLIM

| | | | | |
|-----------------------|-----------------------|------------------------|------------------------|------------------------|
| 30 W | 60 W | 100 W | 160 W | 250 W |
| 24 V | 24 V | 24 V | 24 V | 24 V |
| IP20 | IP20 | IP20 | IP20 | IP20 |
| OT SLIM 30/220-240/24 | OT SLIM 60/220-240/24 | OT SLIM 100/220-240/24 | OT SLIM 160/220-240/24 | OT SLIM 250/220-240/24 |
| 4062172135733 | 4062172135856 | 4062172135870 | 4062172135894 | 4062172135917 |
| 270 x 30 x 17.5 mm | 338 x 30 x 17.5 mm | 374 x 30 x 18.5 mm | 404 x 30 x 21.5 mm | 343 x 60 x 31 mm |

2. Dimmable

Phase-cut dimming

| | | |
|-------------------------|-------------------------|--------------------------|
| 36 W | 75 W | 150 W |
| 24 V | 24 V | 24 V |
| IP20 | IP20 | IP20 |
| OT FIT 36/220-240/24 PC | OT FIT 75/220-240/24 PC | OT FIT 150/220-240/24 PC |
| 4062172237390 | 4062172237413 | 4062172237642 |
| 103 x 67 x 29.5 mm | 110 x 76 x 30 mm | 170 x 76 x 30 mm |

Bluetooth®
-Casambi*

| |
|----------------------------------|
| 80 W |
| 24 V |
| IP20 |
| OTI BLE 80/220...240/24 1...4 CH |
| 4062172046558 |
| 346 x 32 x 22 mm |

OPTOTRONIC intelligent DALI 24 V

| | | | | | | |
|---------------------------------|---------------------------------|----------------------------------|----------------------------|----------------------------|----------------------------|-----------------------------|
| 50 W | 80 W | 160 W | 30 W | 50 W | 80 W | 160 W |
| 24 V | 24 V | 24 V | 24 V | 24 V | 24 V | 24 V |
| IP20 | IP20 | IP20 | IP20 | IP20 | IP20 | IP20 |
| 4 CH | 4 CH | 2 CH | 1 CH | 1 CH | 1 CH | 1 CH |
| DT6/8 | DT6/8 | DT6/8 | | | | |
| OTi DALI 50/220-240/24 4CHDT6/8 | OTi DALI 80/220-240/24 4CHDT6/8 | OTi DALI 160/220-240/24 2CHDT6/8 | OTi DALI 30/220-240/24 1CH | OTi DALI 50/220-240/24 1CH | OTi DALI 80/220-240/24 1CH | OTi DALI 160/220-240/24 1CH |
| 4062172177900 | 4062172177924 | 4062172177948 | Coming soon! | 4062172177962 | 4062172177986 | 4062172178006 |
| 346 x 32 x 22 mm | 346 x 32 x 22 mm | 300 x 50 x 35 mm | 103 x 67 x 29.5 mm | 346 x 32 x 22 mm | 346 x 32 x 22 mm | 300 x 50 x 35 mm |

Dimming devices

| DALI | Bluetooth | DMX | 1-10 V |
|----------------------|------------------|------------------|------------------|
| 240 W | 240 W | 182 W | 120 W |
| 12-48 V | 12-24 V | 12-24 V | 10-24 V |
| IP20 | IP20 | IP20 | IP20 |
| 1-4 CH | 1-4 CH | 1-4 CH | 1-4 CH |
| OTi DALI DIM 1-4CH D | OT BLE DIM | OT DMX RGBW DIM | OT DIM |
| 4062172166010 | 4052899557833 | 4052899557949 | 4050300943459 |
| 181 x 42 x 20 mm | 172 x 42 x 20 mm | 172 x 42 x 20 mm | 172 x 42 x 20 mm |

*Download Casambi app from App store or Google play. For the correct functioning of the Casambi app refer to the Casambi website: <http://www.casambi.com>. The Casambi App is provided to you by Casambi. Inventronics shall have no liability for the Casambi app and does not make any representations, express or implied, about the availability and/or performance of the Casambi app. The Casambi cloud services are provided to you by Casambi. Inventronics shall have no liability for the Casambi cloud services and does not make any representations, express or implied, about the availability and/or performance of the Casambi cloud services. Inventronics shall have no liability for and does not make any representations, express or implied, about the connectivity of Casambi ready products of Inventronics with any other Casambi ready products.

Use our contact form

www.inventronics-light.com/contact-us



Service contact:

Inventronics GmbH

Parkring 31-33, 85748 Garching, Germany

www.inventronics-light.com

support@inventronicsglobal.com

inventronics